

The Williford

From The Aspiration Collection

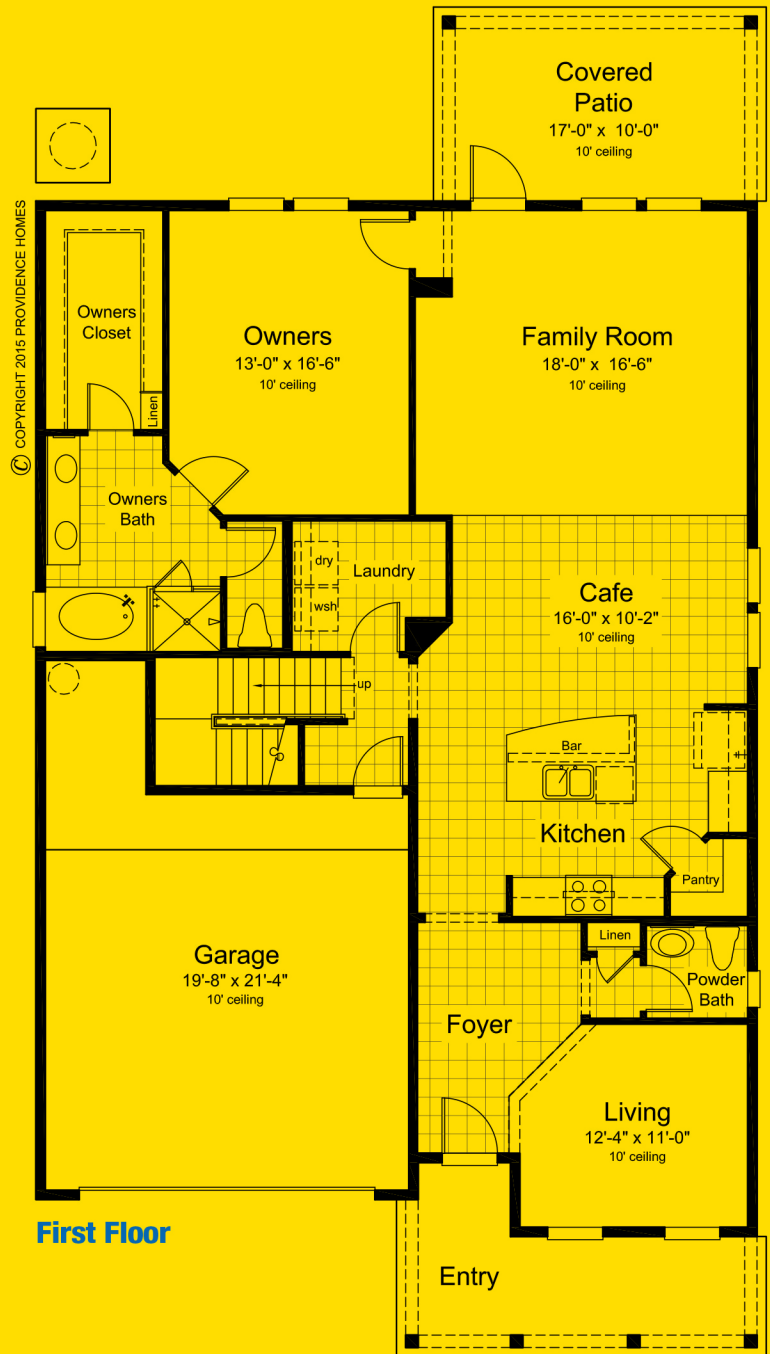
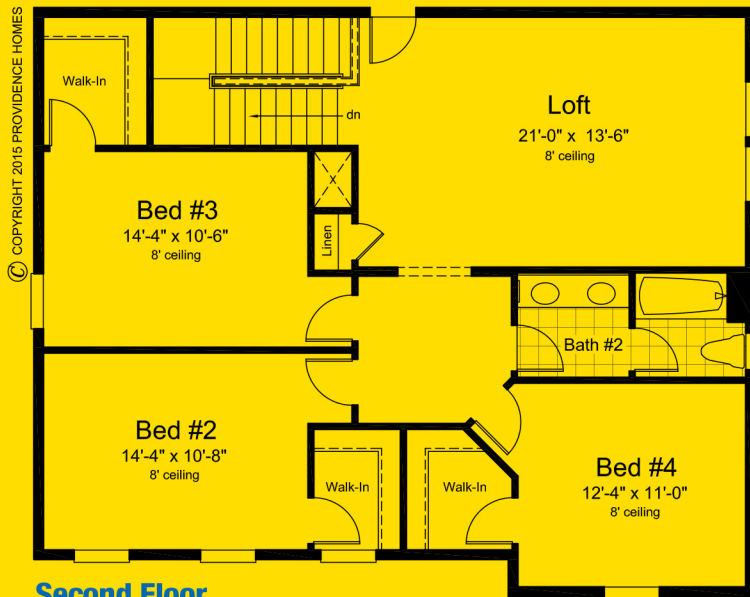
**4 Bedrooms, 2 ½ Baths with
Loft and 2-Car Garage**

Living Area Sq. Ft.: 2,750 • Total Sq. Ft.: 3,541

Additional Structural Options Include (but may not be limited to):

- Bedroom #5 and Bath #3 in lieu of Loft
- Sliding Glass Door at Family Room
- Escape Spa Owners Bath
- Tray Ceiling at Owners Suite
- Utility Cabinets at Mud Room
- Laundry Cabinets with Sink
- Gourmet Kitchen
- Study in lieu of Living Room

For more options, see our website...



Check Out Available Options For This Model On Our Interactive Floorplans At

MyProvidenceHome.com

Illustrations are artists concepts. Actual colors may vary from what is seen on brochure. Dimensions and square footage are approximate. Builder reserves the right to modify floor plans, elevations, colors and materials without notice. Actual areas may vary with construction. Certain items shown are for conception only and may not be included as standard. See standard features for more information. Floor plan shown is for the Low Country elevation; other elevations may vary floor plan slightly. NOT TO SCALE. Last revised 10.15.15. © Copyright 2015 Providence Homes, Inc. – ALL RIGHTS RESERVED.



COMMITTED TO BUILDING
100%
ENERGY STAR
CERTIFIED HOMES



MyProvidenceHome.com
Marketed Exclusively by Providence Realty, LLC

