

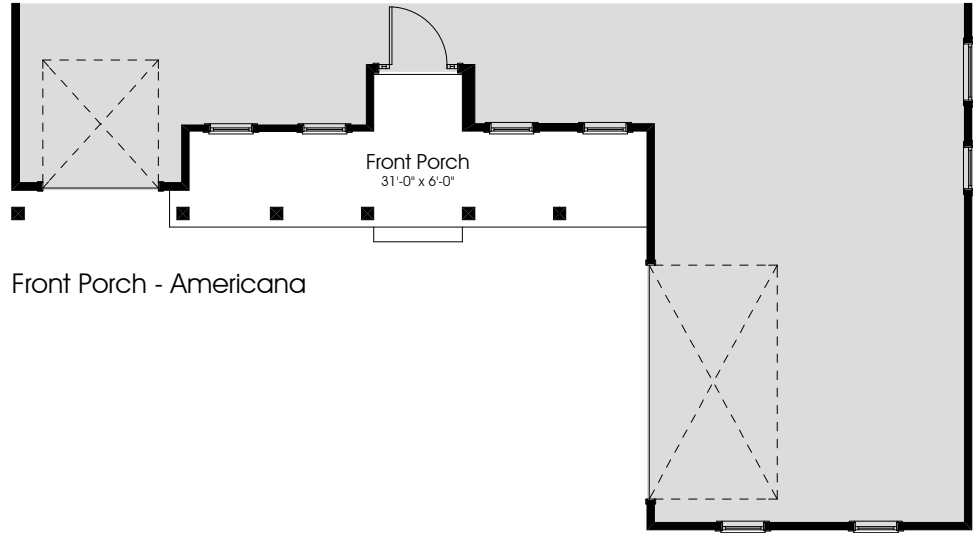
# 3451 Porches



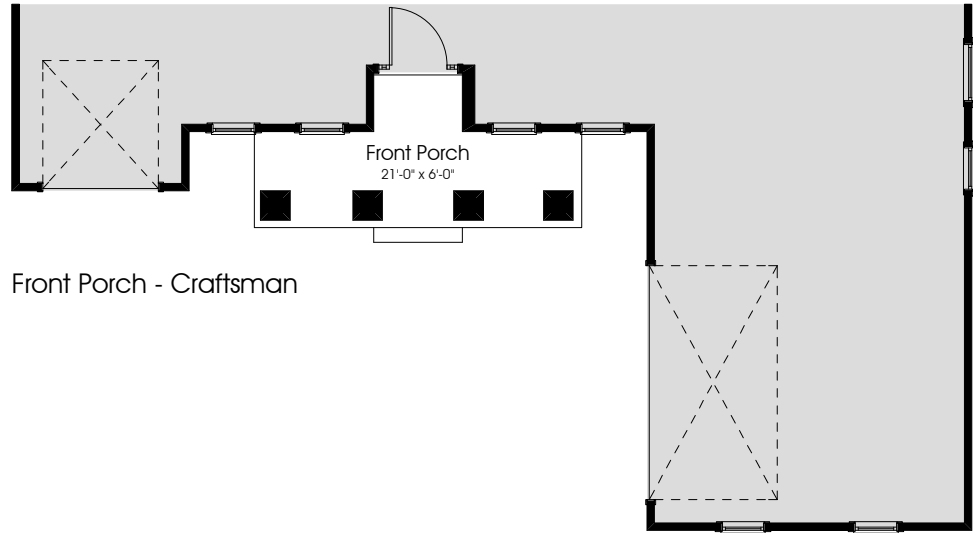
Classic Series

# BRADBURY 3451

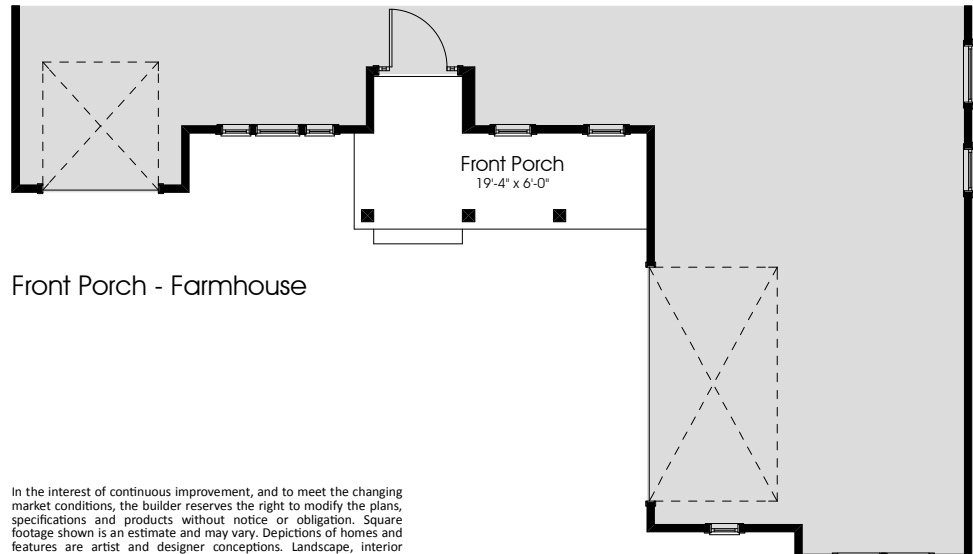
 4  
 3.5  
 3



Front Porch - Americana

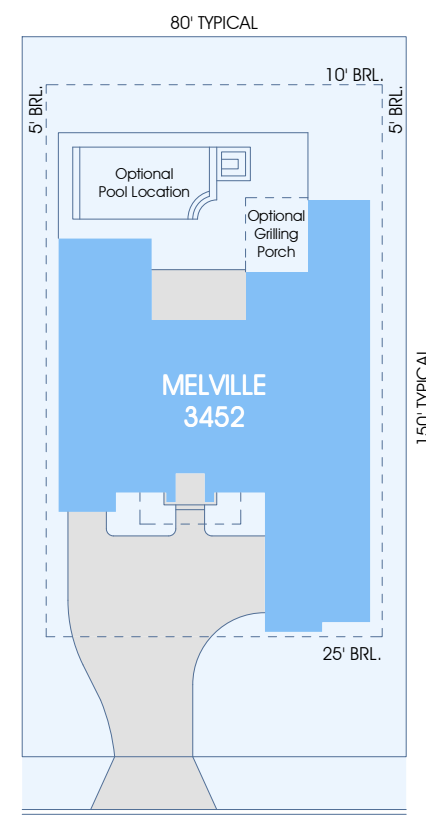


Front Porch - Craftsman



Front Porch - Farmhouse

In the interest of continuous improvement, and to meet the changing market conditions, the builder reserves the right to modify the plans, specifications and products without notice or obligation. Square footage shown is an estimate and may vary. Depictions of homes and features are artist and designer conceptions. Landscape, interior surfaces and finishes may be decorator suggestions that are not included in purchase price. This ad contains general information about the community and is not an offer for the purchase of a new home.



80' x 150' Typical Site Layout

In the interest of continuous improvement, and to meet the changing market conditions, the builder reserves the right to modify the plans, specifications and products without notice or obligation. Square footage shown is an estimate and may vary. Depictions of homes and features are artist and designer conceptions. Landscape, interior surfaces and finishes may be decorator suggestions that are not included in purchase price. This ad contains general information about the community and is not an offer for the purchase of a new home.



The Bradbury is a 1-story home with 3,451 sq. ft. of living area, 4 bedrooms and 3.5 baths. A formal dining room and a home office flank the foyer which opens into a large gathering room and provides a direct view onto the covered lanai. An expansive master suite offers a private retreat while secondary bedrooms are on the opposite side of the home.



# 3451 BRADBURY

# 3451 Pre-Planned Options



Classic Series

Classic Series



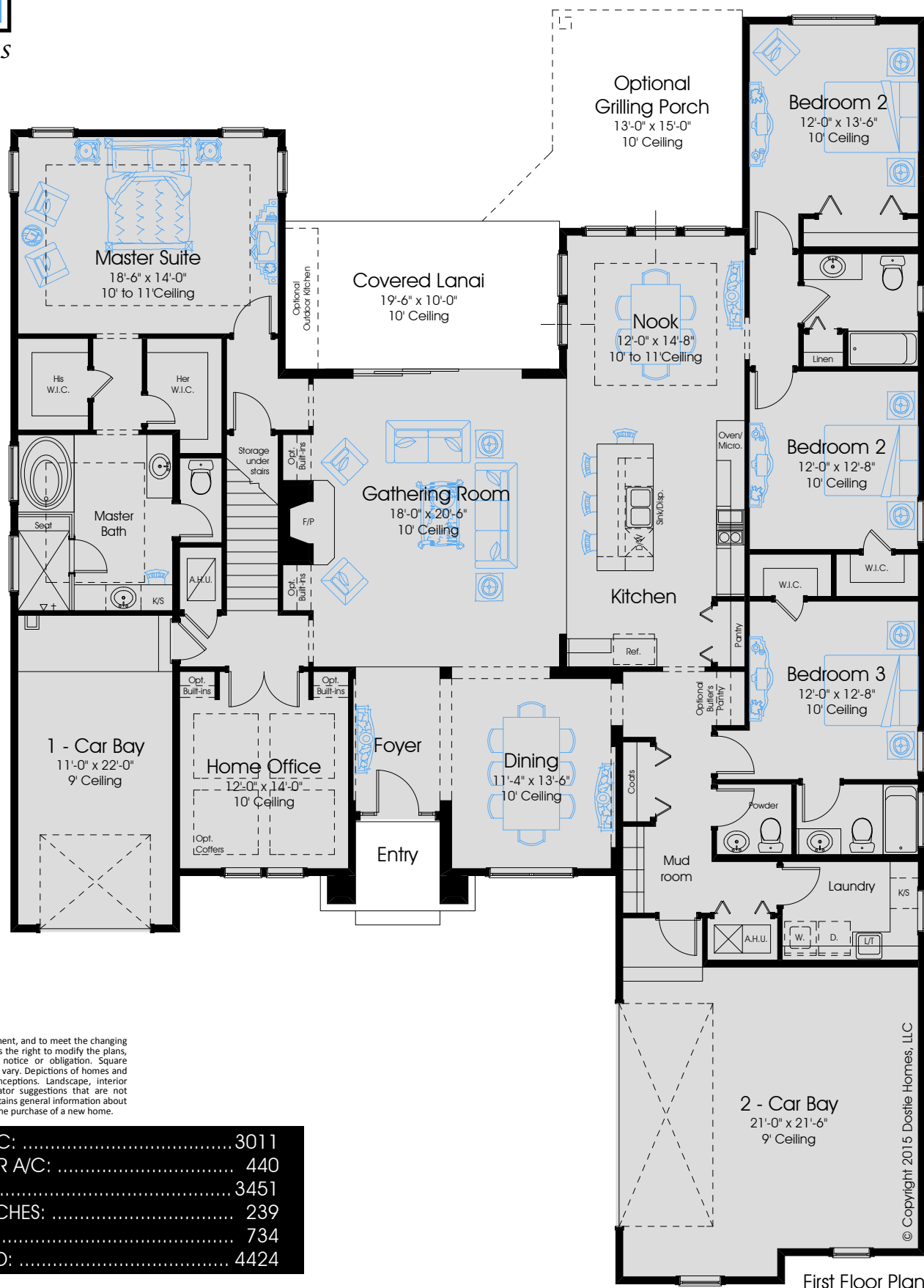
4



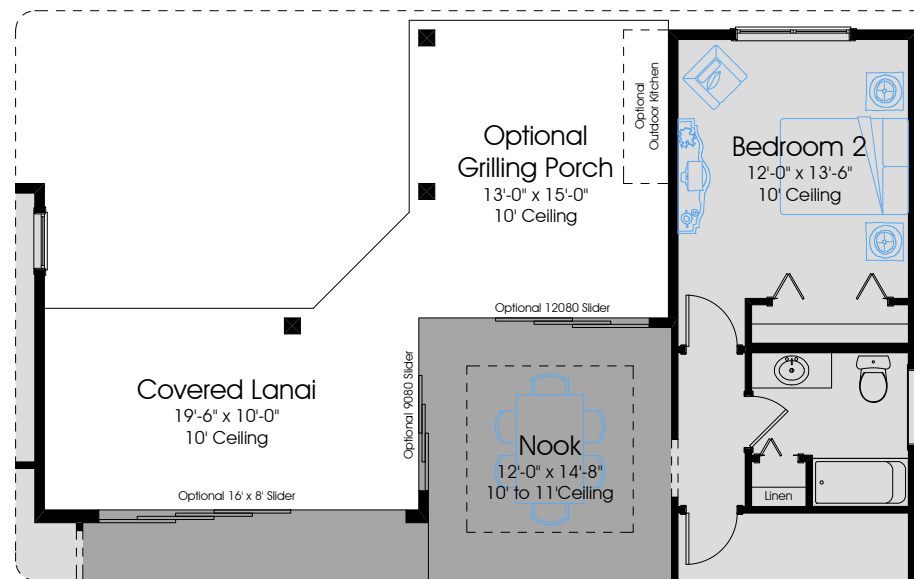
3.5



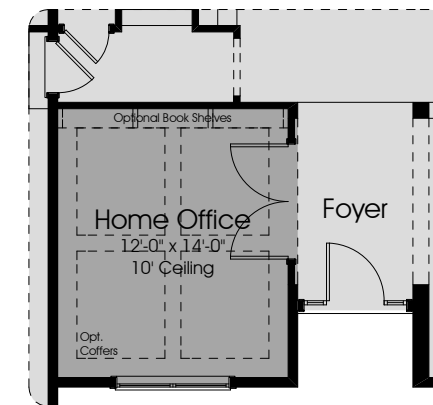
3



First Floor Plan

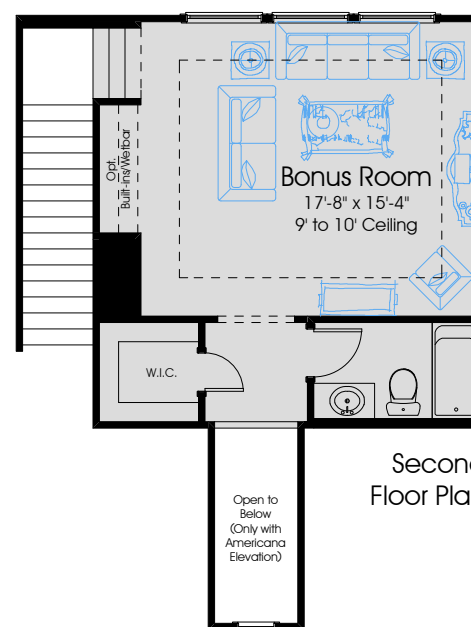


Optional Grilling Porch (Shown with 2 optional sliders at Nook - This Requires the addition of 3 columns at Lanai area. Also shown, optional 16' Slider at Gathering Room)

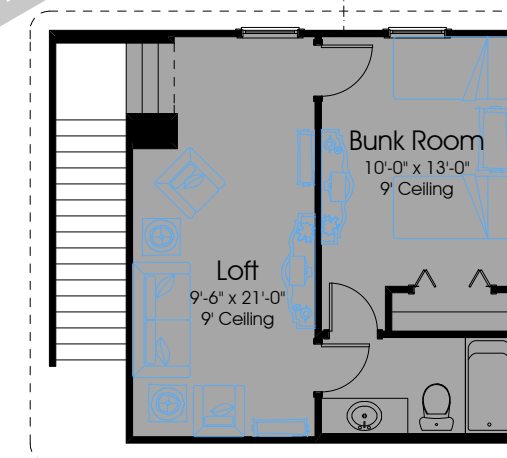


Optional Home Office Entry (Relocates French doors to Home Office to Foyer)

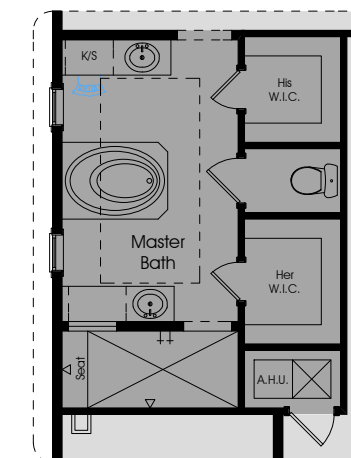
DRAFT



Second Floor Plan



Optional Bunk Room and Loft (Includes standard closet i.l.o. W.I.C. and two separate rooms upstairs i.l.o. Bonus Room)



Optional Master Bath

In the interest of continuous improvement, and to meet the changing market conditions, the builder reserves the right to modify the plans, specifications and products without notice or obligation. Square footage shown is an estimate and may vary. Depictions of homes and features are artist and designer conceptions. Landscape, interior surfaces and finishes may be decorator suggestions that are not included in purchase price. This ad contains general information about the community and is not an offer for the purchase of a new home.

In the interest of continuous improvement, and to meet the changing market conditions, the builder reserves the right to modify the plans, specifications and products without notice or obligation. Square footage shown is an estimate and may vary. Depictions of homes and features are artist and designer conceptions. Landscape, interior surfaces and finishes may be decorator suggestions that are not included in purchase price. This ad contains general information about the community and is not an offer for the purchase of a new home.

FIRST FLOOR A/C:	3011
SECOND FLOOR A/C:	440
TOTAL A/C:	3451
COVERED PORCHES:	239
GARAGES:	734
TOTAL COVERED:	4424